

Orleans Parish Prison Population Projection Updates

James Austin, Ph.D.

JFA Institute

October 19, 2011

Major Findings

1. Reported serious crime remains stable. There has been an increase in the 2nd quarter for 2011 as compared to the 2nd quarter for 2010.
2. The increase in reported serious crimes is limited to property crimes. Violent crimes actually declined by 5 percent in 2011 as compared to 2010.
3. Arrests have continued to decline for all major categories (state, narcotic, city, traffic and juvenile).
4. Compared to the first six months of 2010, arrests have declined by about 13,000.
5. Compared to September 2010, the current OPP population as of September 2011 is about 300 smaller (3,342 on September 30, 2010 compared to 3,061 as of September 15, 2011).
6. The primary reason for the decline has been a very recent reduction in the number of state prisoners held in the OPP.
7. There has been a slight increase in the pretrial (about 100) which can be associated to increases in the length of stay (LOS) for the pretrial releases.

Major Findings

8. As expected and associated with the decline in arrests, there has been a sharp decline in OPP admissions who were admitted for a warrant charge. This is consistent with the large decline in arrests for warrants noted above.
9. The large difference in length of stay among whites and blacks even when controlling for the charge/offense has continued.
10. The base projection issued last year estimated no major change in the OPP population remains valid. However, the basis for the estimate has changed slightly. Specifically where as the DPS&C population was estimated to be 950, that number can be reduced to 850. Conversely the pretrial population can be increased due to a longer LOS.
11. For the OPP jail population to be significantly lowered two major initiatives need to be implemented; the proposed pretrial service agency and the DPS&C population must be further reduced.

Adult Arrests Are Down

Table 3
Orleans Parish Arrests 2004-2010
By Arrest Level

Year	State	Narcotic	City	Traffic	Juvenile	Total
2004	34,221	10,522	54,997	21,505	12,654	139,258
2005	31,278	7,207	39,091	12,434	7,639	97,649
2006	22,035	8,369	29,221	11,911	1,583	73,119
2007	34,273	7,239	33,429	14,540	3,347	92,828
2008	37,057	6,925	29,362	12,719	4,260	90,323
2009	48,255	6,362	23,733	10,734	3,405	92,489
2010	39,912	4,755	15,038	11,423	3,327	74,455

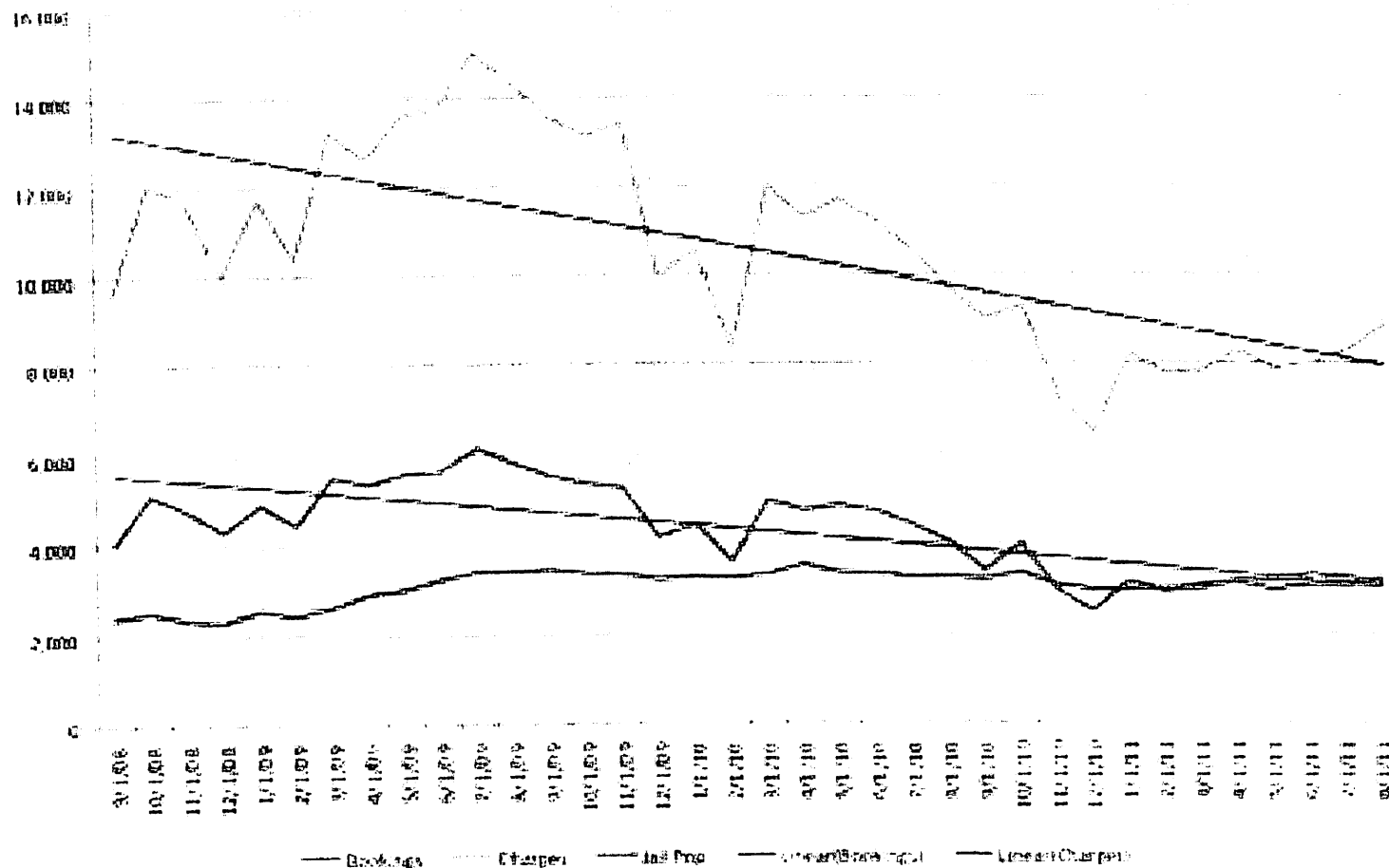
Arrests Down This Year

Table 4
Orleans Parish Arrests
January – July 2010-2011
By Arrest Level

	State	Narcotic	City	Traffic	Juvenile	Total
Total 2010	25,698	2,910	9,669	7,036	1,884	47,197
Total 2011	17,308	1,959	7,366	6,097	1,405	34,135
Difference	-8,390	-951	-2,303	-939	-479	-13,062
% Decline	-33%	-33%	-24%	-13%	-25%	-28%

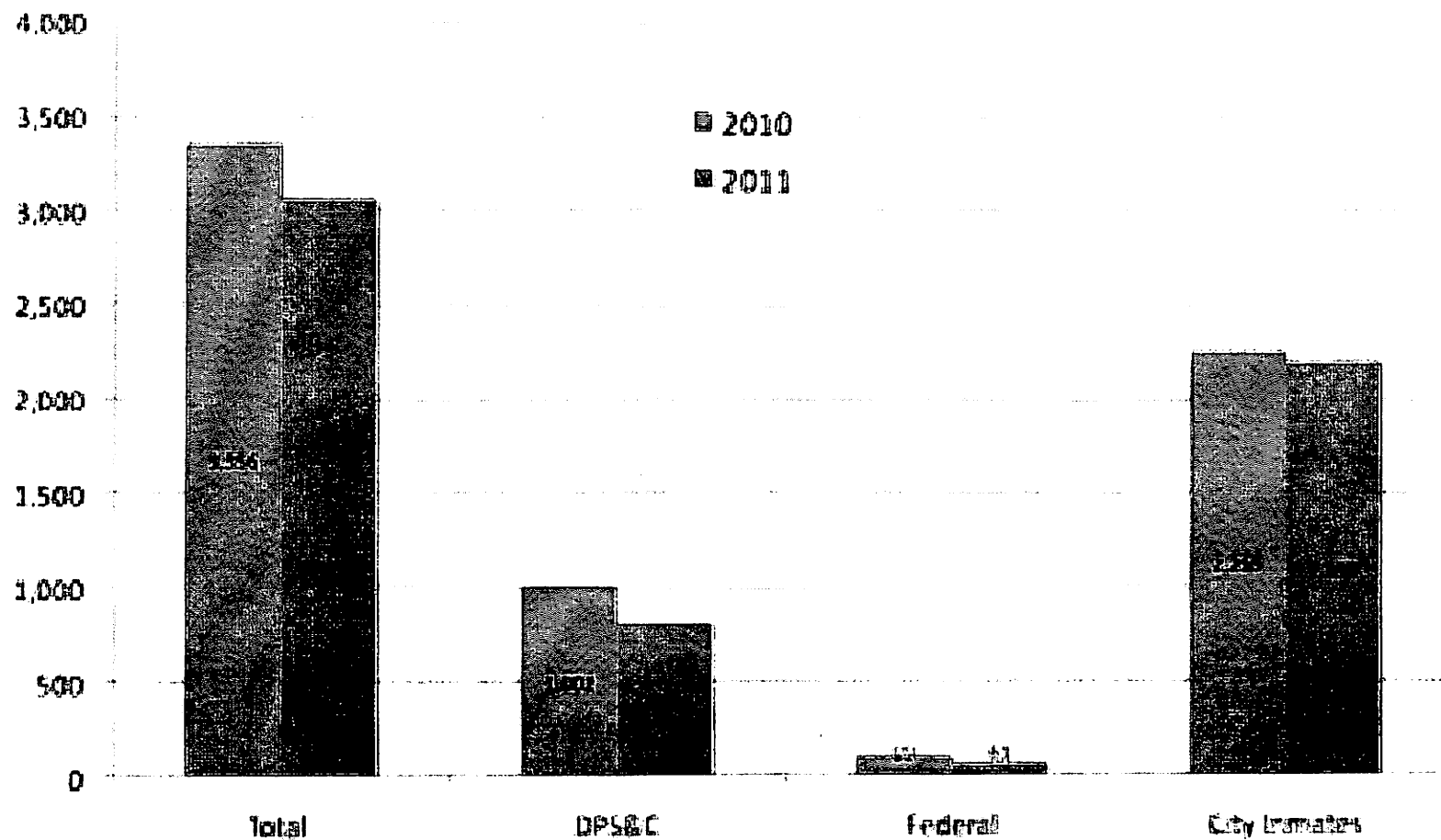
OPP Bookings Are Down

Figure 3. OPP ADP, Bookings and Charges September 2008- August 2011



Jail Population Has Declined

Figure 5. OPP Inmate Population September 2010 versus 2011



Length of Stay is Increasing

Table 9
Primary Methods Of OPP Releases Excluding Warrant Releases and
DPS&C Releases
Sept. 2009 – Aug. 2010 vs.

Method of Release	Sept 2009 – Aug 2010			Sept. 2010 – Aug. 2011		
	N	%	LOS	N	%	Avg. LOS (days)
Releases Except Warrants & DOC	35,274	100.0%	14.7	26,920	100.0%	24.9
Surety/property bond	8,693	24.6%	14.8	7,417	27.6%	15.4
Court release	9,423	26.7%	17.2	6,570	24.4%	30.5
Sheriff's "Fast Track"	5,223	14.8%	0.4	2,633	9.8%	0.2
Cash bond	3,652	10.4%	4.0	3,121	11.6%	4.6
Rollout	2,287	6.5%	15.3	2,287	8.5%	7.6
ROR	1,551	4.4%	8.5	914	3.4%	8.6
Time served	1,320	3.7%	34.8	764	2.8%	45.8
Release	928	2.6%	46.6	1,153	4.3%	69.0
Return to Parole	481	1.4%	2.9	636	2.4%	4.5
Other	1,716	4.9%	79.7	1,425	5.3%	94.0

Proportions Have Not Changed

Table 10
OPP Releases By Legal Status At Release
Sept. 2009 – Aug. 2010 vs. Sept. 2010 – Aug. 2011

Known Legal Status at Release Less Warrants & DPS&C	Sept. 2009 – Aug. 2010		Sept. 2010 – Aug. 2011	
	Total	%	Total	%
Pretrial – Not Sentenced	33,159	94%	25,305	94%
Unknown	3,137	9%	2,322	9%
City	9,291	26%	5,997	22%
Felony	8,311	24%	8,636	32%
Misdemeanor/Traffic	12,420	35%	8,350	31%
Sentenced	2,115	6%	1,615	6%
City	1,467	4%	878	3%
Felony	331	1%	532	2%
Misdemeanor/Traffic	317	1%	205	1%
Total	35,274	100%	26,920	100%

Differences by Race Remain the Same

Table 11
Length Of Stay For Pretrial Felon Releases By Race by Charge
Sept. 2010 – Aug. 2011

PT-Felony Charge	Black			White		
	N	%	LOS (Days)	N	%	LOS (Days)
Violent	1,859	26.1%	158.4	334	17.6%	87.9
Murder	150	2.1%	378.4	10	0.5%	209.7
Sex	311	4.4%	106.5	98	5.2%	45.6
Assault	122	1.7%	164.8	31	1.6%	47.7
Robbery	193	2.7%	175.0	11	0.6%	92.8
Other violent	195	2.7%	77.1	31	1.6%	77.5
Battery	870	12.2%	154.8	153	8.1%	116.9
Domestic Viol.	18	0.3%	53.9	0	0.0%	0.0
Drugs	2,005	28.1%	31.6	366	19.3%	24.7
Drug sale	940	13.2%	36.4	100	5.3%	25.1
Drug possession	1065	14.9%	27.4	266	14.0%	24.6
Weapons	388	5.4%	39.0	17	0.9%	6.9
Non-violent	2,661	37.3%	39.3	1,050	55.4%	26.8
Burglary	298	4.2%	85.2	62	3.3%	40.5
Theft/fraud/forgery	651	9.1%	42.5	140	7.4%	38.5
Other property	197	2.8%	27.5	29	1.5%	44.4
Other non-violent	755	10.6%	29.8	690	36.4%	22.4
Probation Violator	760	10.7%	31.0	129	6.8%	27.0
Unknown	215	3.0%	65.0	127	6.7%	-
Total	7,128	100.0%	68.9	1,894	100.0%	38.3

The JFA Institute
Denver, CO/Malibu, CA/Washington, D.C.

Conducting Justice and Corrections Research for Effective Policy Making

Updated Orleans Parish Prison Ten-Year Inmate Population Projection

Prepared by

**James Austin
Wendy Ware
Roger Ocker**

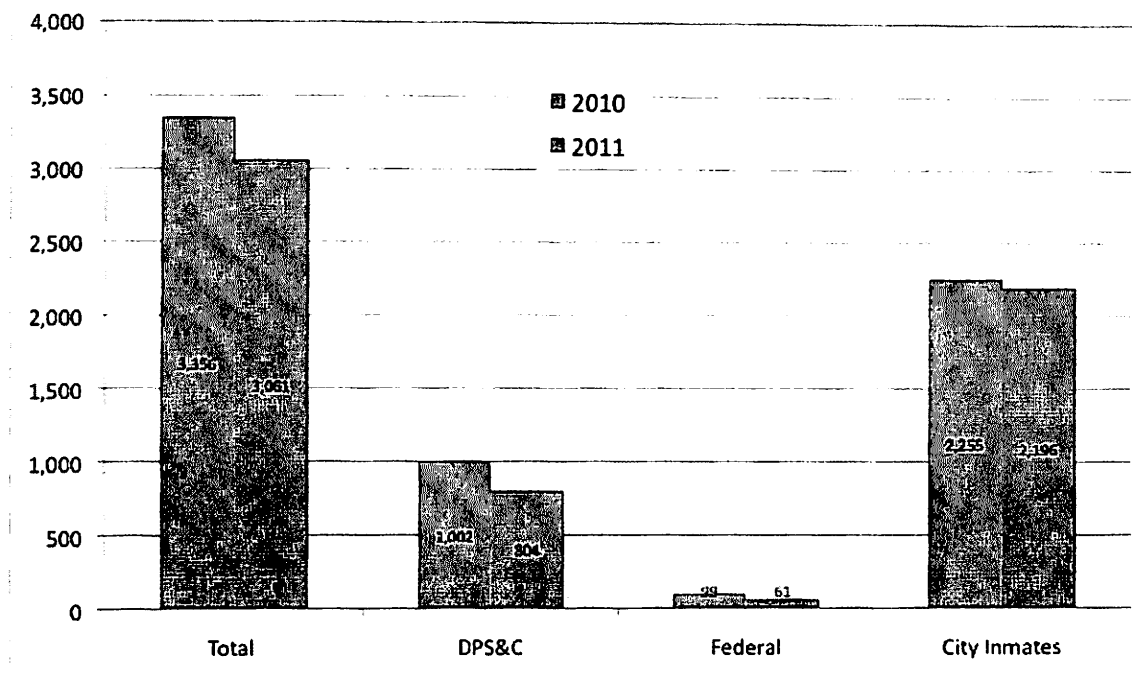
October 2011

720 Kearney St. Denver, CO 80220 Ph. 303-377-1556 **www.JFA-Associates.com**

Major Findings and the Updated OPP Base Projection Summary

1. Reported serious crime remains stable. There has been an increase in the 2nd quarter for 2011 as compared to the 2nd quarter for 2010.
2. The increase in reported serious crimes is limited to property crimes. Violent crimes actually declined by 5 percent in 2011 as compared to 2010.
3. Arrests have continued to decline for all major categories (state, narcotic, city, traffic and juvenile).
4. Compared to the first six months of 2010, arrests have declined by about 13,000.
5. Compared to September 2010, the current OPP population as of September 2011 is about 300 smaller (3,342 on September 30, 2010 compared to 3,061 as of September 15, 2011).
6. The primary reason for the decline has been a very recent reduction in the number of state prisoners held in the OPP.
7. There has been a slight increase in the pretrial (about 100) which can be associated to increases in the length of stay (LOS) for the pretrial releases.
8. As expected and associated with the decline in arrests, there has been a sharp decline in OPP admissions who were admitted for a warrant charge. This is consistent with the large decline in arrests for warrants noted above.
9. The large difference in length of stay among whites and blacks even when controlling for the charge/offense has continued.
10. The base projection issued last year estimated no major change in the OPP population remains valid. However, the basis for the estimate has changed slightly. Specifically where as the DPS&C population was estimated to be 950, that number can be reduced to 850. Conversely the pretrial population can be increased due to a longer LOS.
11. For the OPP jail population to be significantly lowered two major initiatives need to be implemented; the proposed pretrial service agency and the DPS&C population must be further reduced.

OPP Inmate Population September 2010 versus 2011



**Previous Orleans Parish Prison Base Forecast
CY 2010-2020
By Major Subpopulations**

CY	Warrants	Pretrial Misd/Other	Pretrial Felony	Local Sentenced	Sub- Total	DPS&C	Grand Total
Sept. 2010	114	597	1,359	169	2,239	950	3,189
2010	101	591	1,364	162	2,218	950	3,168
2011	93	582	1,384	161	2,220	950	3,170
2012	91	563	1,381	166	2,201	950	3,151
2013	84	546	1,396	165	2,191	950	3,141
2014	79	522	1,383	162	2,146	950	3,096
2015	77	487	1,357	163	2,084	950	3,034
2016	73	470	1,349	161	2,053	950	3,003
2017	66	448	1,372	168	2,054	950	3,004
2018	63	427	1,350	165	2,005	950	2,955
2019	65	392	1,349	158	1,964	950	2,914
2020	58	369	1,360	165	1,952	950	2,902
With 7.5% Peaking	62	397	1,462	177	2,098	1,021	3,120

**Policy Simulations of Implementing Pretrial Services Agency and Reducing
State DPS&C Inmate Populations**

CY	Warrants	Pretrial Misd/Other	Pretrial Felony	Local Sentenced	Sub- Total	DOC	Total
Sept. 2010	114	597	1,359	169	2,239	950	3,189
2010	101	591	1,364	162	2,218	850	3,068
2011	93	519	1,168	161	1,941	250	2,191
2012	91	435	917	166	1,609	250	1,859
2013	84	418	917	165	1,584	250	1,834
2014	79	380	917	162	1,538	250	1,788
2015	77	359	917	163	1,516	250	1,766
2016	73	342	917	161	1,493	250	1,743
2017	66	320	917	168	1,471	250	1,721
2018	63	299	917	165	1,444	250	1,694
2019	65	250	917	158	1,390	250	1,640
2020	58	241	917	165	1,381	250	1,631
With 7.5% Peaking	62	259	986	177	1,485	269	1,753

Introduction

This report provides an update to the 2010 ten-year projection of the Orleans Parish Prison (OPP) population to be housed by the Orleans Parish Sheriff's Office. The study was requested by the City of New Orleans

In completing this study, JFA relied extensively upon data provided by the Orleans Parish Sheriff's Office and New Orleans Police Department.¹ Specifically we received extract files from the New Orleans Parish Sheriff's Office that captured all people admitted and released from the OPP for the past 12 months. A snapshot file of the prisoners in custody as of August 2011 was also received. The New Orleans Police Department provided aggregate data on the number of people arrested and reported crimes since 2009.

This data was used to re-load the projection model to estimate the number of admissions or bookings for the jail system over the next ten years. These estimates are typically based on demographic, crime and arrest trends. For each year of admissions, the associated ID groups, legal status and LOS are based on current data produced by the local criminal justice agencies. We are most interested in the current rather than prior policies since we are trying to mimic the current system.

Each extract file contained detailed data on the person's admission and release dates, all criminal justice charges, the reason for admission or booking, the method and legal status at release. Because the dates for these admission and release dates were provided, it was possible to calculate the various LOS for each admission and release.

Updated Crime Trends

Crime trends are based on the Federal Bureau of Investigations Uniform Crime Reporting (UCR) data system. The UCR represents all serious crimes reported to police. It has been criticized for its inability to record all crimes (in particular drug crimes) and fluctuating due to changes in law enforcement crime reporting standards. However, assuming reporting standards are not dramatically changing from year to year, it is a good measure of the extent of serious crimes being committed each year.

Figure 1, and, Tables 1 and 2 summarize the long and short-term UCR trends. Here one can see that number for all violent and non-violent crime categories have significantly declined since 2002. However, in the first six months of the 2011, there was an increase in the number of property crimes as compared to the first six months of 2010.

¹ The authors would like to express their great appreciation to Sheriff Marlin N. Gusman, and Joe Simmons of the Orleans Parish Sheriff's Office. Paul McCaskell provided reported crime and arrest data. Finally, Sam Joel of the Office of the Mayor of New Orleans helped coordinate all of our data collection efforts.

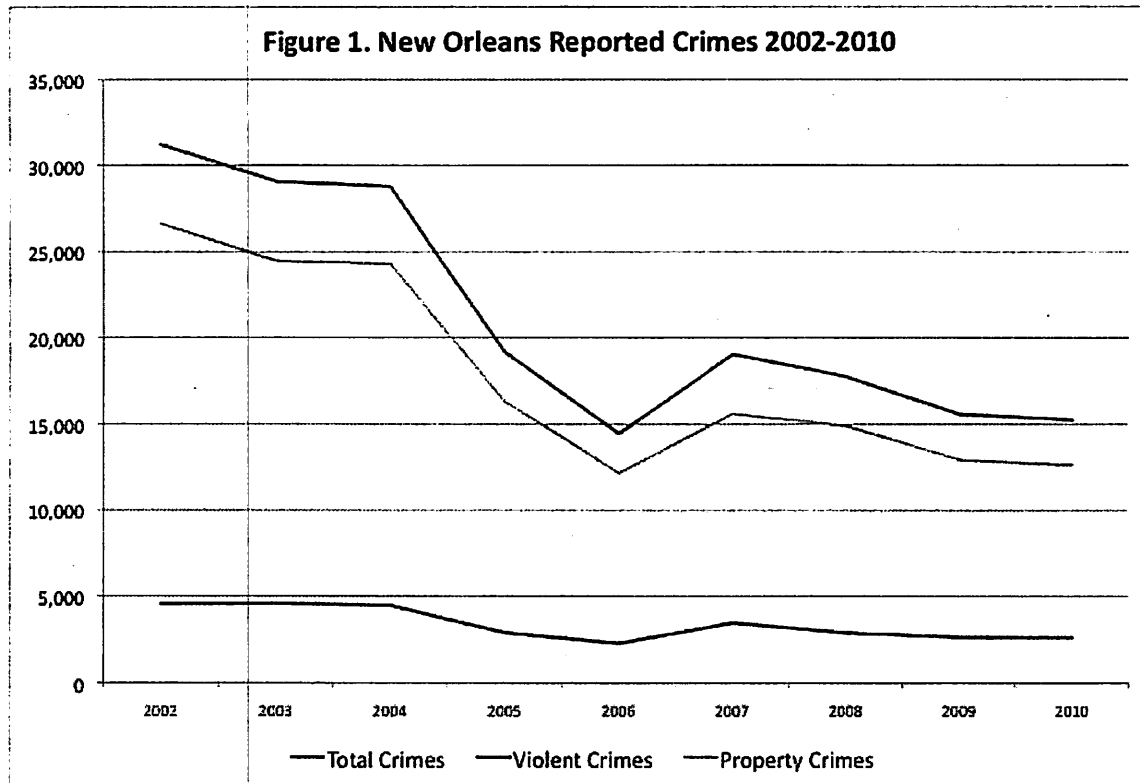


Table 1
Reported Crimes in New Orleans 2002-2010

Year	Murder	Rape	Armed Robb.	Simple Robb.	Assault	Violent Total	Burglary	Theft	Auto Theft	Total Property	Total Index Crimes
2002	257	162	1,517	477	2,142	4,555	4,759	14,325	7,566	26,650	31,205
2003	274	213	1,534	537	2,037	4,595	4,879	12,726	6,872	24,477	29,072
2004	265	189	1,381	455	2,178	4,468	5,238	12,544	6,534	24,316	28,784
2005	211	143	831	293	1,397	2,875	4,011	8,150	4,109	16,270	19,145
2006	160	87	556	205	1,245	2,253	4,087	5,228	2,863	12,178	14,431
2007	210	115	948	206	1,973	3,452	5,039	7,354	3,190	15,583	19,035
2008	179	65	902	183	1,540	2,869	4,591	7,081	3,208	14,880	17,749
2009	174	98	733	199	1,410	2,614	3,821	6,507	2,616	12,944	15,558
2010	175	144	704	249	1,321	2,593	3,695	6,540	2,410	12,645	15,238
% Change	-32%	-11%	-54%	-48%	-38%	-43%	-22%	-54%	-68%	-53%	-51%

Table 2
2010 and 2011 Comparisons

Crime Type	2011	2010	Difference
1st Quarter			
Violent	530	628	-98
Property	2,936	2,889	47
Total 1st Quarter	3,466	3,517	-51
2nd Quarter			0
Violent	739	708	31
Property	3,839	3,029	810
Total 2nd Quarter	4,578	3,737	841
Totals To date			
Violent	1,269	1,336	-67
Property	6,775	5,918	857
Total	8,044	7,254	790

Updated Arrest Trends

Consistent with the reported crime trends, adult arrests have been declining. In 2004 the year before Katrina, there were approximately 140,000 arrests made. By 2010 it had dropped to 74,455 (see Table 2). Of the three factors reviewed to date (demographic, reported crime and arrests) these are the most significant as they have a direct bearing on the number of admissions to the jail system. The largest component is state level charges followed by City and Traffic level charges. With the exception of the Traffic level arrests, all categories for the first 7 months in 2011 have significantly lower numbers.

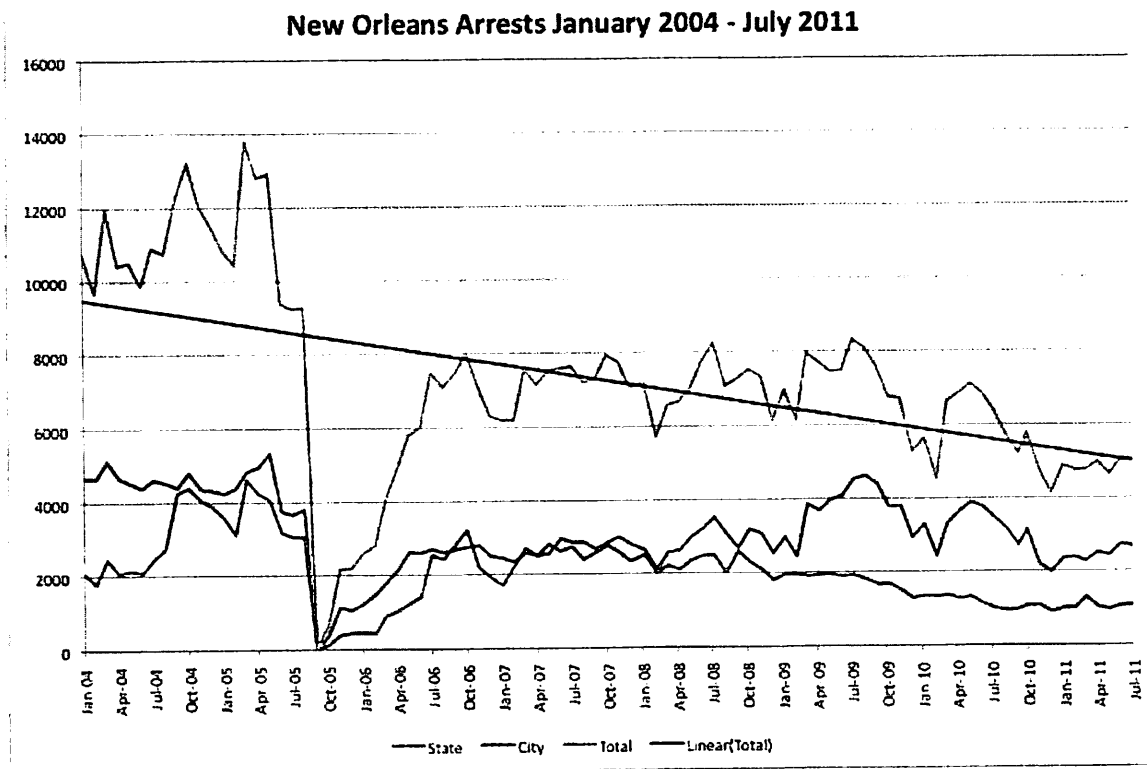
Table 3
Orleans Parish Arrests 2004-2010
By Arrest Level

Year	State	Narcotic	City	Traffic	Juvenile	Total
2004	34,221	10,522	54,997	21,505	12,654	139,258
2005	31,278	7,207	39,091	12,434	7,639	97,649
2006	22,035	8,369	29,221	11,911	1,583	73,119
2007	34,273	7,239	33,429	14,540	3,347	92,828
2008	37,057	6,925	29,362	12,719	4,260	90,323
2009	48,255	6,362	23,733	10,734	3,405	92,489
2010	39,912	4,755	15,038	11,423	3,327	74,455

Table 4
Orleans Parish Arrests
January – July 2010-2011
By Arrest Level

	State	Narcotic	City	Traffic	Juvenile	Total
Total 2010	25,698	2,910	9,669	7,036	1,884	47,197
Total 2011	17,308	1,959	7,366	6,097	1,405	34,135
Difference	-8,390	-951	-2,303	-939	-479	-13,062
% Decline	-33%	-33%	-24%	-13%	-25%	-28%

Figure 2



OPP Aggregate Trends

Consistent with the arrest trends there was a steady decline in the number of admissions to the OPP from 2008 to September 2010 (see Figure 3). Further the number of charges associated with these admissions had dropped significantly. However, since October 2010 the admissions have stabilized and the number of charges associated with each booking have increased. Such a trend would signal stabilization in the ADP if length of stay remains constant.

As of August 10, 2011, the OPP consisted of 3,010 inmates which is about 300 below what it was 2010 at the same time (3,323). However, as shown in Figure 4, the drop in the overall ADP is almost solely due to a decline in the number of state DOC inmates housed in the OPP.

Figure 5 and Tables 5 and 6 show the distinct legal categories of the OPP population for 2010 and 2011. There are several significant patterns to note here. First, as noted in Figure 5, the OPP population has declined by about 300. A major reason for the decline occurred the DPS&C population which has recently dropped to about 850. Conversely, the number of inmates that are under the jurisdiction of the City of New Orleans and Orleans Parish has increased.

Tables 5 and 6 offer a more detailed breakdown of the daily populations for September 2010 and October 2011. The most important change is that the proportion and number of inmates in pretrial status which has increased from 44% to 53% which is being caused in part by the lower number of DPS&C inmates. However, the absolute number of pretrial inmates has also increased from 1,427 to 1,519. If we look at the type of crime that the pretrial population is charged with, the proportions have remained fairly constant (Table 7).

What has changed is the length of stay (LOS) and especially for pretrial releases. As shown in Table 8, the overall LOS has grown from 19 days to 30 days. A large reason for the increased LOS is due to the reduction in the number warrant admissions as noted earlier. These warrant admissions have a short LOS so then they are diverted from the OPP, the overall LOS for the remaining inmates who have a longer LOS, increases the overall LOS.

Tables 9 and 10 look at the LOS without the “warrant” cases being calculated. Here one can see that the LOS has increased for certain legal statuses. It should be emphasized that some of these legal statuses are difficult to measure, but the overall trend is clear and is consistent with the aggregate level data – fewer admissions but longer lengths of stay.

Finally, the disparity between blacks and whites in their length of stays even when controlling for the primary charge has remained the same (Table 11).

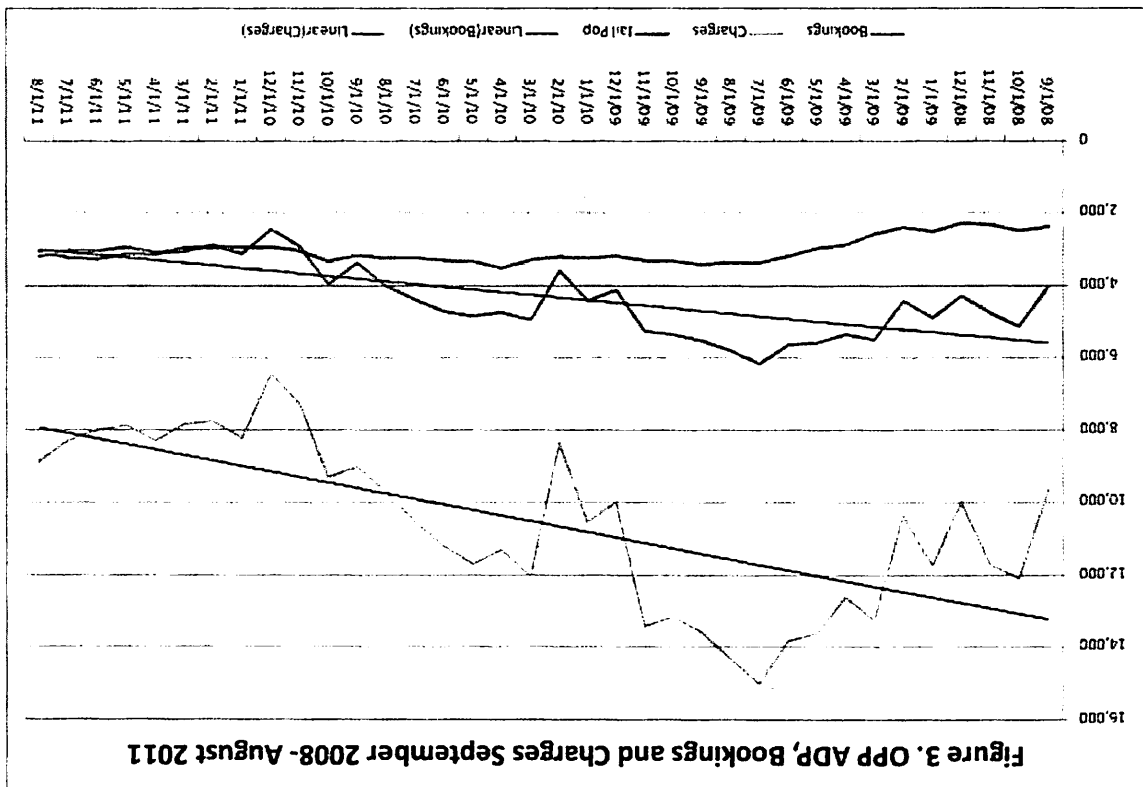
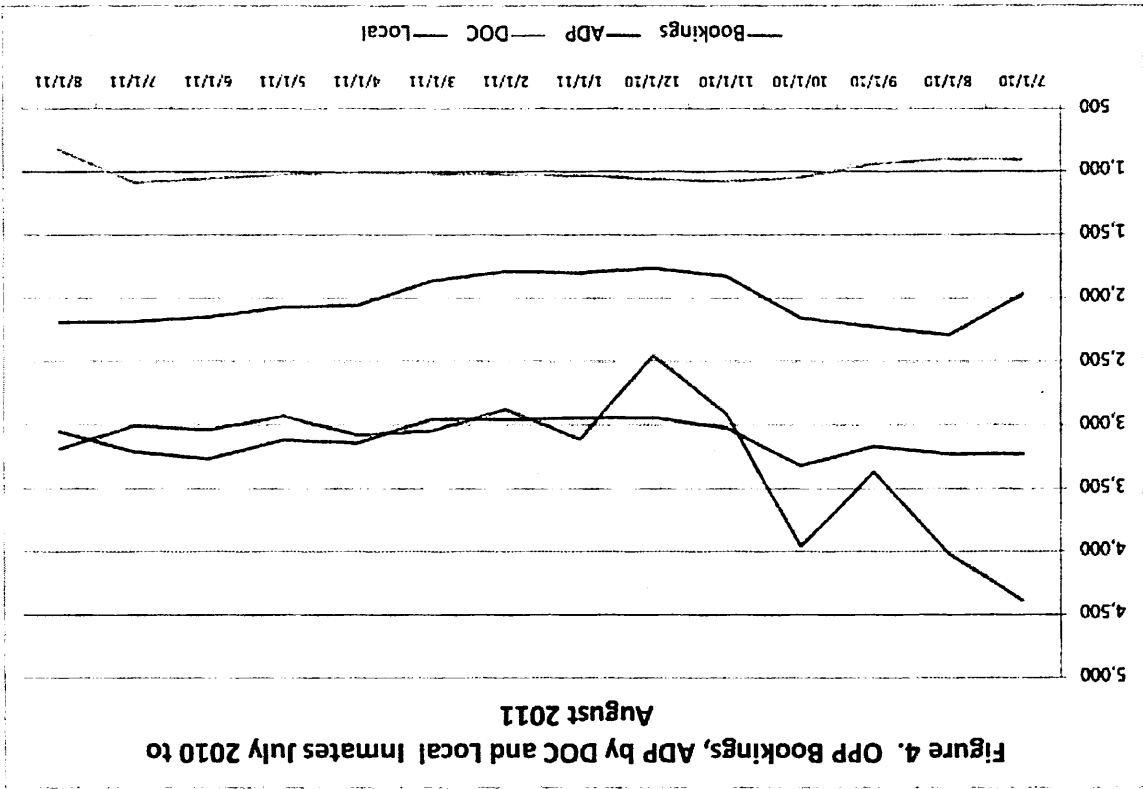
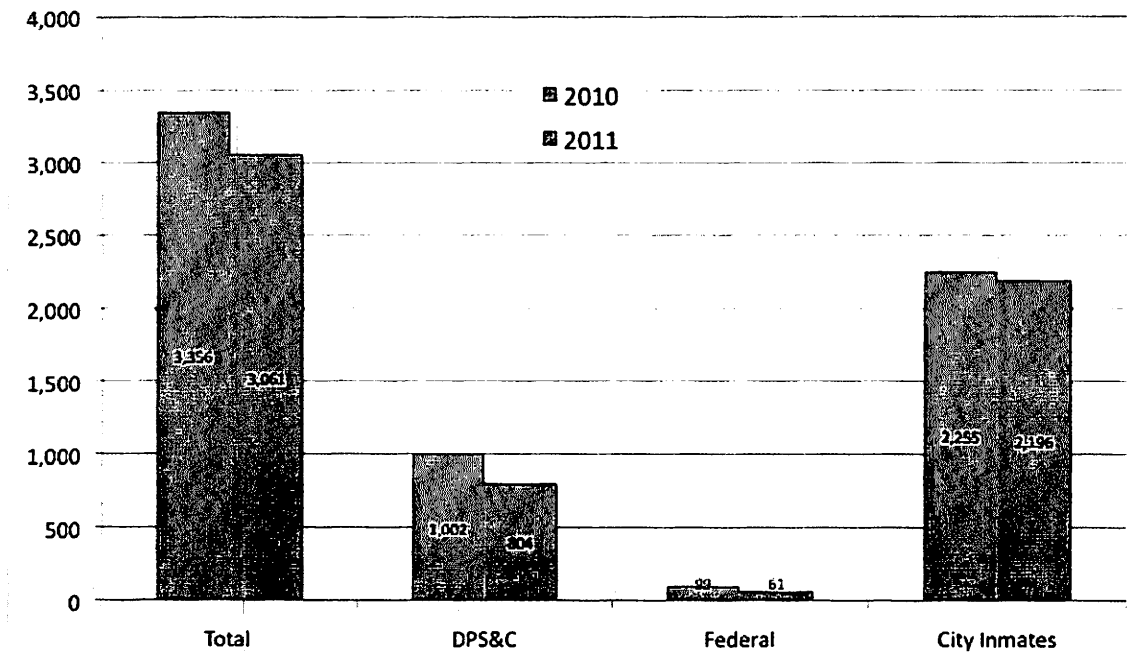


Figure 5. OPP Inmate Population September 2010 versus 2011



**Table 5
Orleans Parish Prison Population, October 7, 2011
By Gender And Selected Major Legal Statuses**

Legal Status	Males		Females		Totals	
	N	%	N	%	N	%
Pretrial	1,358	51%	161	70%	1,519	53%
State/Felony	1,234	47%	136	59%	1,370	48%
City/Misd	116	4%	23	10%	139	5%
Traffic	8	0%	2	1%	10	0%
Sentenced	103	4%	17	7%	120	4%
Parish Prison	43	2%	1	0%	44	2%
City Misd	60	2%	16	7%	76	3%
Traffic	0	0%	0	0%	0	0%
Probation Violations	241	9%	26	11%	267	9%
Parole Violations	137	5%	8	3%	145	5%
Total DPS&C	803	30%	11	5%	814	28%
Regular DPS&C	731	28%	11	5%	742	26%
DPS&C Work Release	72	3%	0	0%	72	3%
Total All Detained	2,642	100%	230	100%	2,872	100%

Note: Not all categories are shown in this table.

Table 6
Orleans Parish Prison Population, September 30, 2010
By Gender And Selected Major Legal Statuses

Legal Status	Males		Females		Totals	
	N	%	N	%	N	%
Pretrial	1,275	40%	149	5%	1,424	44%
State/Felony	1,174	36%	129	4%	1,303	40%
City/Misd	75	2%	17	1%	92	3%
Traffic	26	1%	3	0%	29	1%
Sentenced	155	5%	15	0%	170	5%
Parish Prison	53	2%	4	0%	57	2%
City Misd	97	3%	11	0%	108	3%
Traffic	5	0%	0	0%	5	0%
Probation Violations	194	6%	22	1%	216	7%
Parole Violations	131	4%	8	0%	139	4%
Total DPS&C	1,000	31%	25	1%	1,025	32%
Regular DPS&C	924	29%	25	1%	949	29%
DPS&C Work Release	71	2%	0	0%	71	2%
Total All Detained	3,085	100%	257	100%	3,342	100%

Note: Not all categories are shown in this table.

Table 7
Major Offense Charges For The Pretrial Population
September 2010 vs. October 2011

Charge	2010		2011	
	N=1,419	%	N=1,519	%
Violent	661	47%	706	46%
Murder	229	16%	237	16%
Sex	106	8%	106	7%
Assault	108	8%	137	9%
Robbery	100	7%	129	8%
Other violent	68	5%	63	4%
Domestic violence	50	4%	34	2%
Drugs	177	16%	232	15%
Drug sale	123	9%	157	10%
Drug possession	54	4%	75	5%
Weapons	42	3%	50	3%
Non-Violent	539	38%	531	35%
Burglary	72	5%	87	6%
Theft/fraud/forgery	67	5%	89	6%
Other property	22	2%	30	2%
Other non-violent	378	27%	325	21%

Table 8
All OPP Releases By Legal Status At Release by Major Release Method

Legal Status	Sept. 2009 – Aug. 2010			Sept. 2010 – Aug. 2011		
	Releases	%	LOS	Releases	%	LOS
Total Releases	55,800	100%	19.2	37,515	100%	29.9
Legal Status at Release						
Warrant	18,979	34%	4.2	9,363	25%	5.5
Pretrial Felons	9,032	16%	56.9	9,113	24%	62.1
Sentenced Felons	1,151	2%	262.2	1281	3%	300.8
Misd./Traffic Pretrial	12,420	22%	4.0	8,354	22%	4.2
Misd./Traffic Sent.	323	1%	46.2	207	1%	46.8
City Sentenced	1,467	3%	22.3	878	2%	25.3
City Pretrial	9,291	17%	3.5	5,997	16%	3.4
Unknown	3,137	6%	15.0	2,322	6%	14.3

Table 9
Primary Methods Of OPP Releases Excluding Warrant Releases and
DPS&C Releases
Sept. 2009 – Aug. 2010 vs.

Method of Release	Sept 2009 – Aug 2010			Sept. 2010 – Aug. 2011		
	N	%	LOS	N	%	Avg. LOS (days)
Releases Except Warrants & DOC	35,274	100.0%	14.7	26,920	100.0%	24.9
Surety/property bond	8,693	24.6%	14.8	7,417	27.6%	15.4
Court release	9,423	26.7%	17.2	6,570	24.4%	30.5
Sheriff's "Fast Track"	5,223	14.8%	0.4	2,633	9.8%	0.2
Cash bond	3,652	10.4%	4.0	3,121	11.6%	4.6
Rollout	2,287	6.5%	15.3	2,287	8.5%	7.6
ROR	1,551	4.4%	8.5	914	3.4%	8.6
Time served	1,320	3.7%	34.8	764	2.8%	45.8
Release	928	2.6%	46.6	1,153	4.3%	69.0
Return to Parole	481	1.4%	2.9	636	2.4%	4.5
Other	1,716	4.9%	79.7	1,425	5.3%	94.0

Table 10
OPP Releases By Legal Status At Release
Sept. 2009 – Aug. 2010 vs. Sept. 2010 – Aug. 2011

Known Legal Status at Release Less Warrants & DPS&C	Sept. 2009 – Aug. 2010		Sept. 2010 – Aug. 2011	
	Total	%	Total	%
Pretrial – Not Sentenced	33,159	94%	25,305	94%
Unknown	3,137	9%	2,322	9%
City	9,291	26%	5,997	22%
Felony	8,311	24%	8,636	32%
Misdemeanor/Traffic	12,420	35%	8,350	31%
Sentenced	2,115	6%	1,615	6%
City	1,467	4%	878	3%
Felony	331	1%	532	2%
Misdemeanor/Traffic	317	1%	205	1%
Total	35,274	100%	26,920	100%

Table 11
Length Of Stay For Pretrial Felon Releases By Race by Charge
Sept. 2010 – Aug. 2011

PT-Felony Charge	Black			White		
	N	%	LOS (Days)	N	%	LOS (Days)
Violent	1,859	26.1%	158.4	334	17.6%	87.9
Murder	150	2.1%	378.4	10	0.5%	209.7
Sex	311	4.4%	106.5	98	5.2%	45.6
Assault	122	1.7%	164.8	31	1.6%	47.7
Robbery	193	2.7%	175.0	11	0.6%	92.8
Other violent	195	2.7%	77.1	31	1.6%	77.5
Battery	870	12.2%	154.8	153	8.1%	116.9
Domestic Viol.	18	0.3%	53.9	0	0.0%	0.0
Drugs	2,005	28.1%	31.6	366	19.3%	24.7
Drug sale	940	13.2%	36.4	100	5.3%	25.1
Drug possession	1065	14.9%	27.4	266	14.0%	24.6
Weapons	388	5.4%	39.0	17	0.9%	6.9
Non-violent	2,661	37.3%	39.3	1,050	55.4%	26.8
Burglary	298	4.2%	85.2	62	3.3%	40.5
Theft/fraud/forgery	651	9.1%	42.5	140	7.4%	38.5
Other property	197	2.8%	27.5	29	1.5%	44.4
Other non-violent	755	10.6%	29.8	690	36.4%	22.4
Probation Violator	760	10.7%	31.0	129	6.8%	27.0
Unknown	215	3.0%	65.0	127	6.7%	-
Total	7,128	100.0%	68.9	1,894	100.0%	38.3