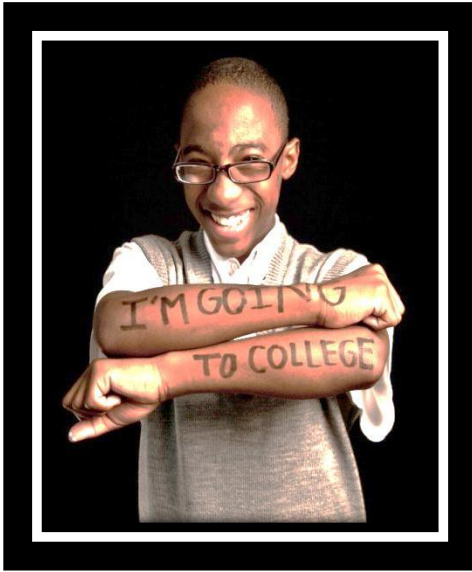




Abramson Information Session

Objective – LWBT better understand our organization. 😊



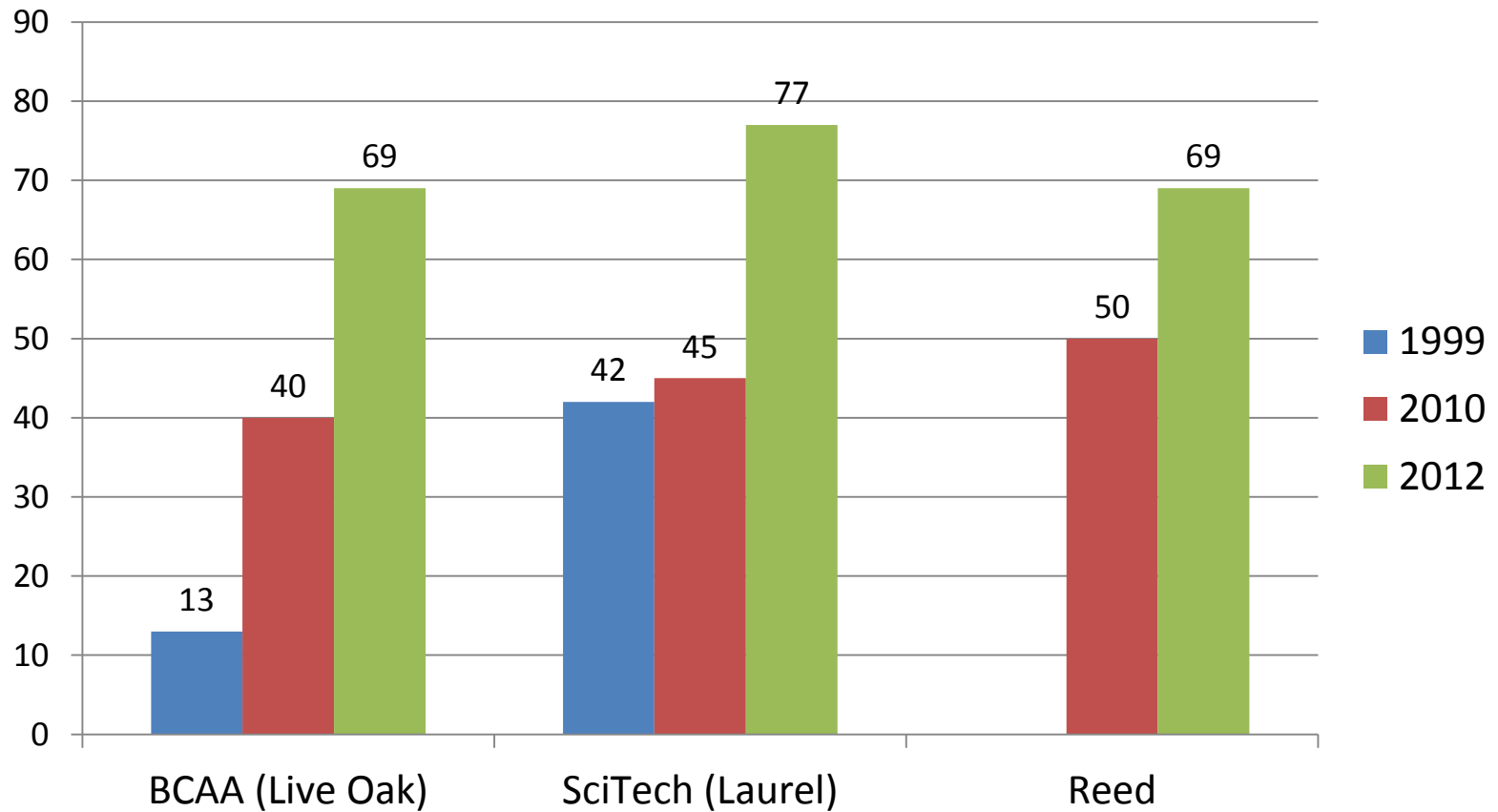


Our 5 Schools for 2013-14

1. Batiste Cultural Arts Academy at Live Oak – a cultural arts themed school
2. SciTech Academy at Laurel – a STEM themed school
3. Reed Elementary (Little Woods to Dolores Aaron) – a STEM themed school
4. Schaumburg Elementary – a cultural arts themed school
5. Accelerated High School – located in the Bauduit building uptown

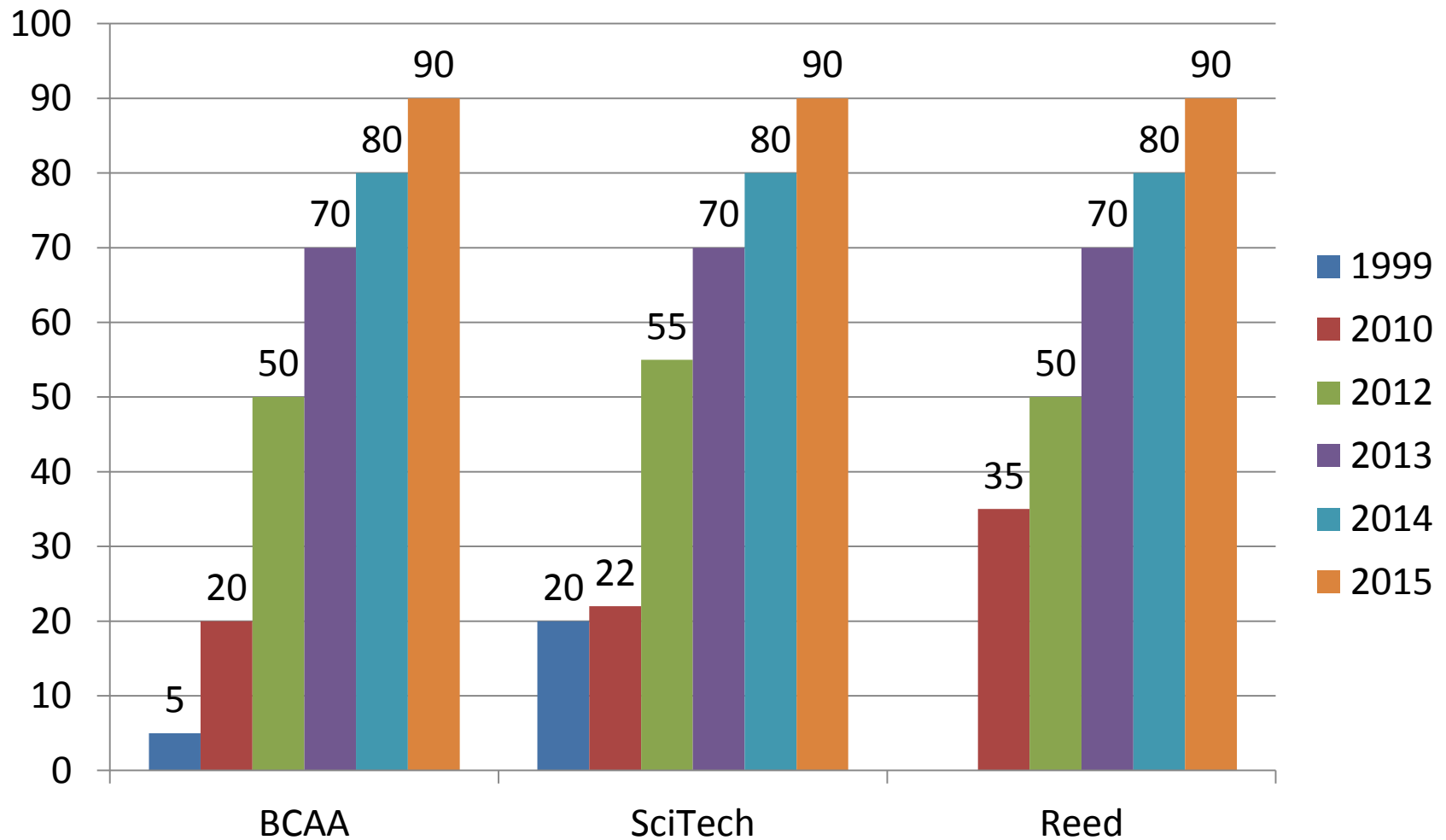


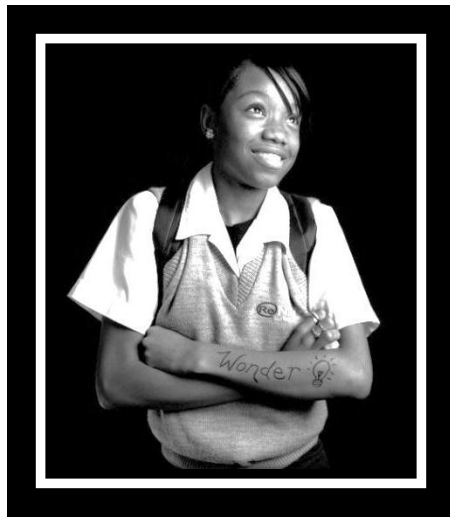
School Performance Score (SPS) Growth





Perspective on College ready





WHY ReNEW? SCHOOLS

- Rigorous, college preparatory education
- Smaller school setting
- Quality professional development for teachers
- Innovative practices – laptops at home and computer-based learning
- Value-added incentive bonuses
- Committed to get the best adult in every classroom
- Themed schools – STEM and Creative Arts
- After school day care
- Competitive sports teams
- Field trips(studies) and college campus visits
- Governed by a local Board (see packet for details)



Vision for Schaumburg for 2013-14



2012 Presidential Awardee

ARTS creating success in schools



ReNEW Year-Round Calendar for Schaumburg

DRAFT

2013 - 2014

DRAFT



July 2013						
Su	M	Tu	W	Th	F	Sa
	1	2	3	4	5	6
7	8	9	10	11	12	13
14	15	16	17	18	19	20
21	22	23	24	25	26	27
28	29	30	31			

August 2013						
Su	M	Tu	W	Th	F	Sa
				1	2	3
4	5	6	7	8	9	10
11	12	13	14	15	16	17
18	19	20	21	22	23	24
25	26	27	28	29	30	31

September 2013						
Su	M	Tu	W	Th	F	Sa
1	2	3	4	5	6	7
8	9	10	11	12	13	14
15	16	17	18	19	20	21
22	23	24	25	26	27	28
29	30					

Events	
Legend	
Report Card Days / Parent Conference (no school for students)	
Prof. Dev. School Based - no school for students	
New Teacher Training Days (7-1 to 7-2)	
Prof. Dev. Network Based - no school for student	
Universal Screening Completion (STAR Math/ELA)	
Quarter Exam / Mastery Learning Quiz	

October 2013						
Su	M	Tu	W	Th	F	Sa
		1	2	3	4	5
6	7	8	9	10	11	12
13	14	15	16	17	18	19
20	21	22	23	24	25	26
27	28	29	30	31		

November 2013						
Su	M	Tu	W	Th	F	Sa
					1	2
3	4	5	6	7	8	9
10	11	12	13	14	15	16
17	18	19	20	21	22	23
24	25	26	27	28	29	30

December 2013						
Su	M	Tu	W	Th	F	Sa
1	2	3	4	5	6	7
8	9	10	11	12	13	14
15	16	17	18	19	20	21
22	23	24	25	26	27	28
29	30	31				

4th of July Holidays (7-3 to 7-5)	
Prof. Dev. Days - no school for students	
First Day for Students (7-17)	
Labor Day (9-2)	
Fall Intersession (10-7 to 10-13)	
Prof. Dev. Network Based - no school for student	
Thanksgiving Break (11-25 to 11-29)	
Winter Intersession (12-25 to 1-3)	

January 2014						
Su	M	Tu	W	Th	F	Sa
			1	2	3	4
5	6	7	8	9	10	11
12	13	14	15	16	17	18
19	20	21	22	23	24	25
26	27	28	29	30	31	

February 2014						
Su	M	Tu	W	Th	F	Sa
						1
2	3	4	5	6	7	8
9	10	11	12	13	14	15
16	17	18	19	20	21	22
23	24	25	26	27	28	

March 2014						
Su	M	Tu	W	Th	F	Sa
						1
2	3	4	5	6	7	8
9	10	11	12	13	14	15
16	17	18	19	20	21	22
23	24	25	26	27	28	29
30	31					

Winter Holidays (12-25 and 1-1)	
Prof. Dev. Day - no school for students	
ML King Day (1-20)	
Mardi Gras Break (3-3 to 3-7)	
LEAP Constructed Response (3-18)	
LEAP and iLEAP (4-7 to 4-11)	
Prof. Dev. Network Based - no school for student	

April 2014						
Su	M	Tu	W	Th	F	Sa
		1	2	3	4	5
6	7	8	9	10	11	12
13	14	15	16	17	18	19
20	21	22	23	24	25	26
27	28	29	30			

May 2014						
Su	M	Tu	W	Th	F	Sa
				1	2	3
4	5	6	7	8	9	10
11	12	13	14	15	16	17
18	19	20	21	22	23	24
25	26	27	28	29	30	31

June 2014						
Su	M	Tu	W	Th	F	Sa
1	2	3	4	5	6	7
8	9	10	11	12	13	14
15	16	17	18	19	20	21
22	23	24	25	26	27	28
29	30					

Prof. Dev. Day - no school for students	
Good Friday / Easter Break (4-18 to 4-21)	
Spring Intersession (4-16 to 5-2)	
Memorial Day (5-26)	
Last Day of school for students (6-4)	
Prof. Dev. Network Based - no school for student	
Intervention and Advanced Placement (CC) Session (Blooded)	
Summer Intersession (6-3 to 6-27)	



Q and A

Thank you for considering ReNEW Schools and please get your one-app in as soon as possible